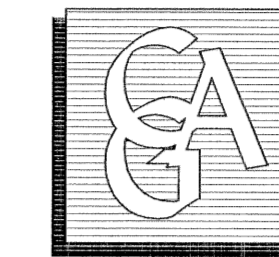


# SIERRA-SONOMA BAY

A PORTION OF THE NORTHEAST ONE QUARTER (NE 1/4), OF SECTION 30, TOWNSHIP 42 SOUTH, RANGE 43 EAST IN THE CITY OF RIVIERA BEACH, PALM BEACH COUNTY, FLORIDA,

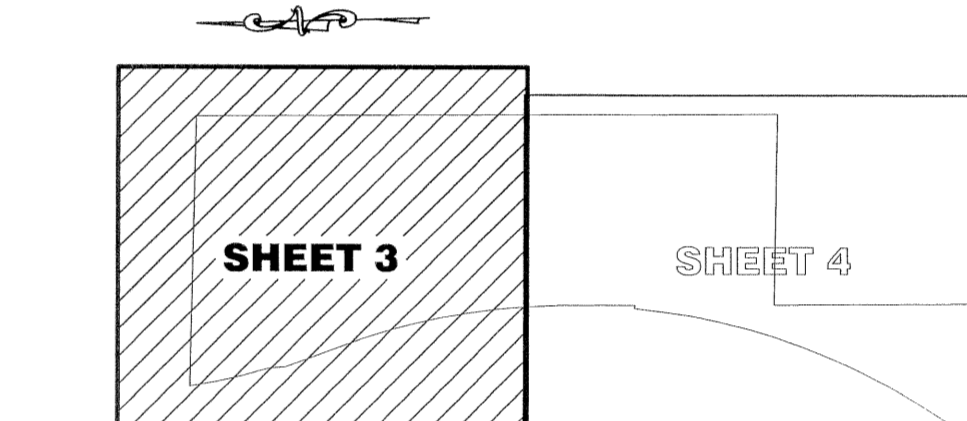
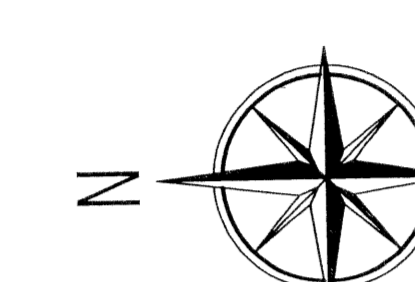
This Instrument Prepared By:  
Gregory J. Clements, P.S.M.



**Calvin, Giordano & Associates, Inc.**  
Engineers Surveyors Planners

1800 Eller Drive, Suite 600  
Ft. Lauderdale, Florida 33316  
Phone: 954.921.7781 Fax 954.921.8807

Certificate of Authorization No. LB 6791  
January, 2004



KEY MAP  
NOT TO SCALE

### SURVEYOR'S NOTES

BEARINGS SHOWN HEREON ARE BASED ON THE EAST LINE OF THE NE 1/4 OF SECTION 30, TOWNSHIP 42 SOUTH, RANGE 43 EAST, HAVING A BEARING OF N01°07'54".

PRM INDICATES PERMANENT REFERENCE MONUMENT 4"x 4" CONCRETE MONUMENT STAMPED LB#6791

THERE SHALL BE NO BUILDINGS, OR OTHER STRUCTURES, PLACED ON WATER/SEWER EASEMENTS.

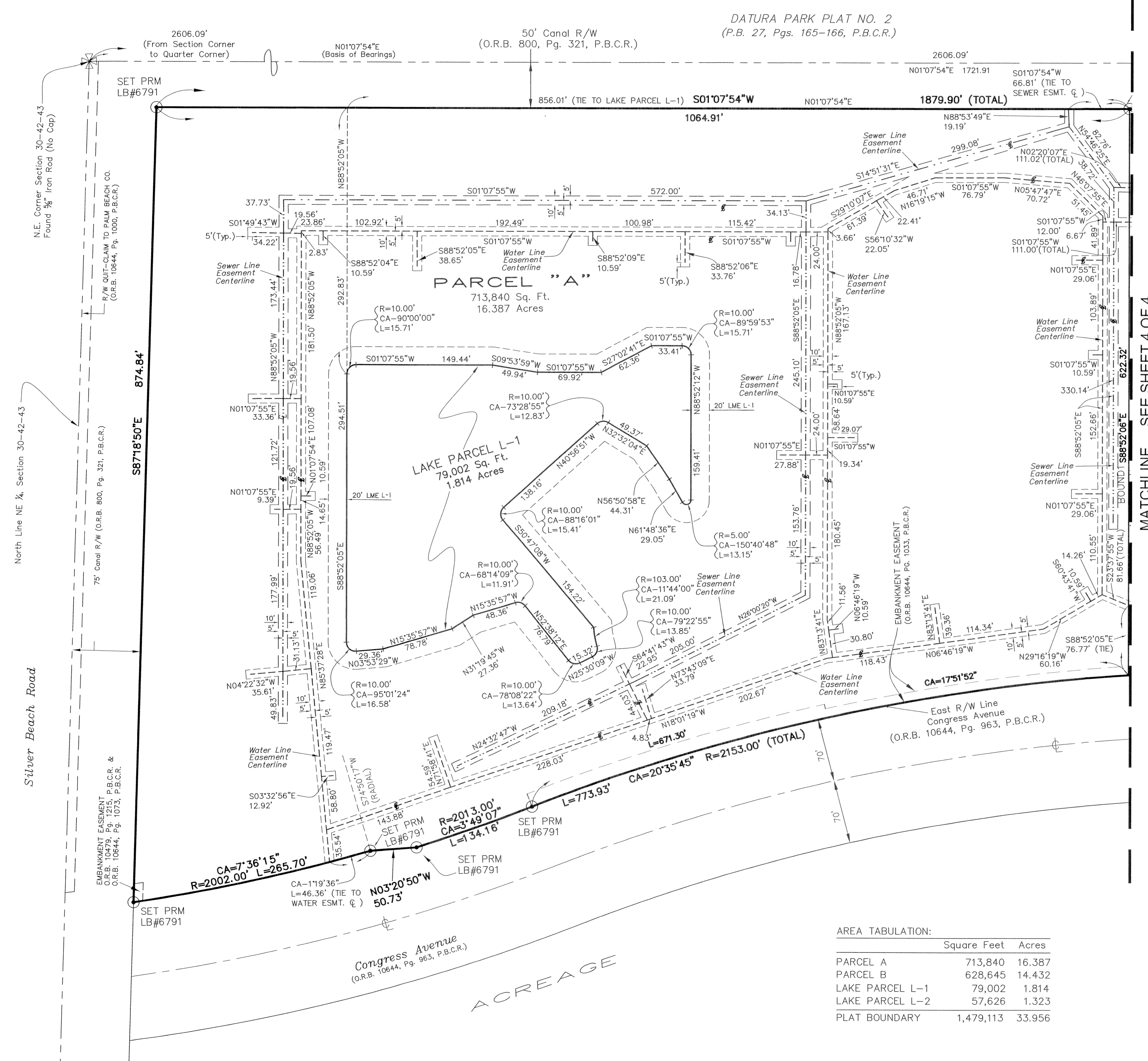
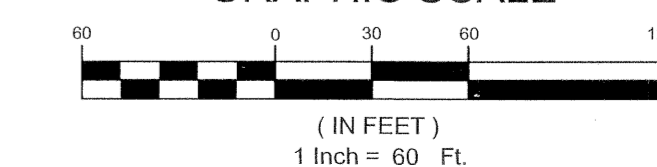
### LEGEND:

- P.B.C.R. = PALM BEACH COUNTY RECORDS
- CL = CENTERLINE
- LB = LICENSED BUSINESS
- LME = LAKE MAINTENANCE EASEMENT
- O.R.B. = OFFICIAL RECORDS BOOK
- P.B. = PLAT BOOK
- P.G. = PAGE
- P.R.M. = PERMANENT REFERENCE MONUMENT 4"x 4" CONCRETE MONUMENT LB#6791
- R/W = RIGHT-OF-WAY
- SQ. FT. = SQUARE FEET
- (Typ.) = TYPICAL
- - - - - = WATER LINE EASEMENT CENTERLINE
- - - - - = SEWER LINE EASEMENT CENTERLINE

### AREA TABULATION:

	Square Feet	Acres
PARCEL A	713,840	16.387
PARCEL B	628,645	14.432
LAKE PARCEL L-1	79,002	1.814
LAKE PARCEL L-2	57,626	1.323
PLAT BOUNDARY	1,479,113	33.956

### GRAPHIC SCALE



MATCHLINE SEE SHEET 4 OF 4

ACREAGE

P:\PROJECTS\2002-0227-208 Sierra Bay Apartments SURVEY\PLAT 3\022723-1-PLAT.DWG:eng